



- CITY OF ELBERTON**
- 1. CITY HALL (D-5)
 - 2. FIRE DEPT. (D-5)
 - 3. POLICE DEPT. (D-5)
 - 4. ELBERTON UTILITIES (C-5)
 - 5. PUBLIC WORKS (C-5)
 - 6. RECYCLING CENTER (D-6)

- EDUCATIONAL**
- 1. HIGH SCHOOL (D-3)
 - 2. MIDDLE SCHOOL (D-5)
 - 3. DOVES CREEK ELEM. (D-2)
 - 4. BLACKWELL ELEM. (C-6)
 - 5. FALLING CREEK ELEM. (H-7)
 - 6. PUBLIC LIBRARY (D-6)
 - 7. GRANITE BOWL (D-6)
 - 8. BEAVERDAM ELEM. (A-8)
 - (SEE INSET)
 - 9. ELBERTON CHRISTIAN SCHOOL (E-3)
 - 10. ATHENS TECH SATELLITE SCHOOL (D-2)
 - 11. 4-H CENTER (B-5)
 - 12. ELBERT COUNTY BOARD OF EDUCATION (B-5)
 - 13. HOPE CENTER (D-6)

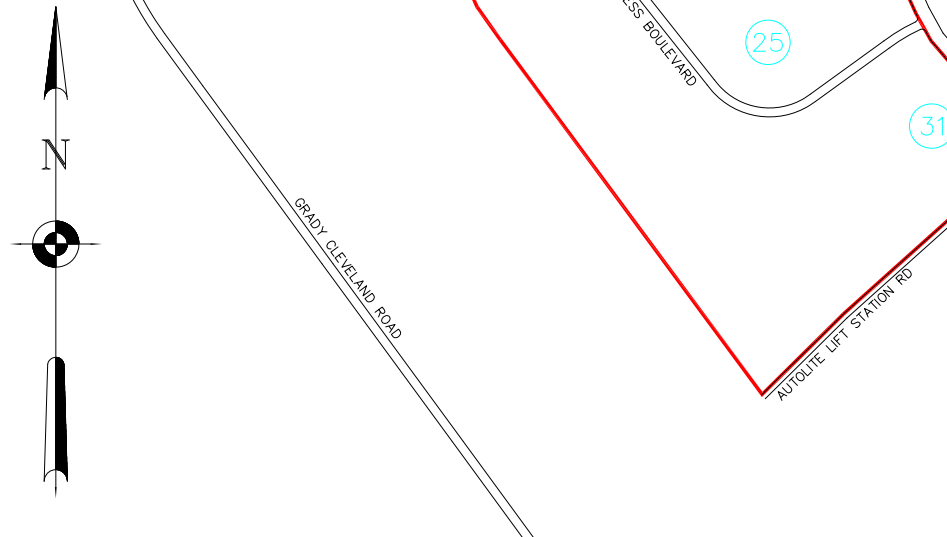
- BUSINESSES/ORGANIZATIONS**
- 1. HONEYWELL CORPORATION (E-1)
 - 2. BI-LO SHOPPING CENTER (E-7)
 - 3. DAYS INN (D-6)
 - 4. ELBERTON MILLS (E-7)
 - 5. ELBERTON OAKS APPTS. (G-7)
 - 6. ELMHURST CEMETARY (B-6)
 - 7. FAIRGROUNDS (B-5)
 - 8. DRY CLEANERS (D-6)
 - 9. LAUNDRY MATS (D-6, E-5, F-7)
 - 10. DAY NITE INN (G-7)
 - 11. ELBERTON INN (G-7)
 - 12. INGLIS SHOPPING CENTER (F-7)
 - 13. JOLISE INN (G-7)
 - 14. MAGNOLIA ESTATES (C-5)
 - 15. CHURCHES (B-4, B-6, C-5, C-6, D-4, D-5, D-6, G-6, H-7)

- 16. MILL VILLAGE (E-7)
- 17. OAK LANE (C-6)
- 18. PETERSBURG TOWERS (G-7)
- 19. RADIO STATION (C-4)
- 20. PILGRIM'S PRIDE (F-8)
- 21. SUNNY BROOK (F-3)
- 22. SPRING VALLEY (F-3)
- 23. SPRING VALLEY NURSING HOME (F-3)
- 24. TALL TIMBERS (C-4)
- 25. BUBBA FOODS (F-2)
- 26. VFW (G-7)
- 27. WAL-MART (F-7)
- 28. FAMBROUGH PLACE (SUBDIV.) (H-5)
- 29. ELBERT THEATER (D-5)
- 30. SIEGLE-ROBERTS PLASTICS INC. (F-2)
- 31. LION PLASTICS (G-2)
- 32. ELBERT COUNTRY CLUB (H-6)
- 33. SHOPPING CENTER (F-7)

- MEDICAL**
- 1. ELBERT MEMORIAL HOSPITAL (C-4)
 - 2. THE WELLNESS CENTER (C-4)
 - 3. THE MEDICAL CENTER (C-5)
 - 4. CLINICS AND VARIOUS OFFICES (C-4, C-5, D-4, D-5, D-6, E-6, E-7)
 - 5. DIALYSIS CENTER (F-7)
 - 6. PHARMACIES (C-4, D-5, D-6, E-6)

- ELBERT COUNTY & OTHERS**
- 1. COURTHOUSE (D-5)
 - 2. COUNTY COMMISSIONERS OFFICE (D-5)
 - 3. SHERIFF DEPARTMENT (D-5)
 - 4. DETENTION CENTER (D-5)
 - 5. HEALTH DEPARTMENT (C-4)
 - 6. CHAMBER OF COMMERCE/CIVIC CENTER (D-5)
 - 7. GRANITE ASSOCIATION (C-5)
 - 8. GRANITE MUSEUM (C-4)
 - 9. RESCUE CENTER (911) (C-6)
 - 10. POST OFFICE (D-5)
 - 11. RECREATION CENTERS (A-5, D-7, E-5)
 - 12. LITTLE LEAGUE FIELD (E-5)
 - 13. SENIOR LEAGUE FIELD (C-5)
 - 14. COUNTY ADMINISTRATIVE OFFICES (D-5)
 - 15. TEMP. EMPLOYMENT AGENCY (D-5)
 - 16. GA DEPT. OF LABOR (E-6)

- FINANCIAL**
- 1. PINNACLE BANK (F-7)
 - 2. PINNACLE BRANCH (C-5)
 - 3. REGIONS BANK (D-5)
 - 4. NORTHEAST GEORGIA BANK (F-7)
 - 5. ELBERTON FEDERAL SAVINGS & LOAN ASSOC. (D-5)



SCALE

0 400' 800' 1,600' 4,000'

DATE: May 2015

